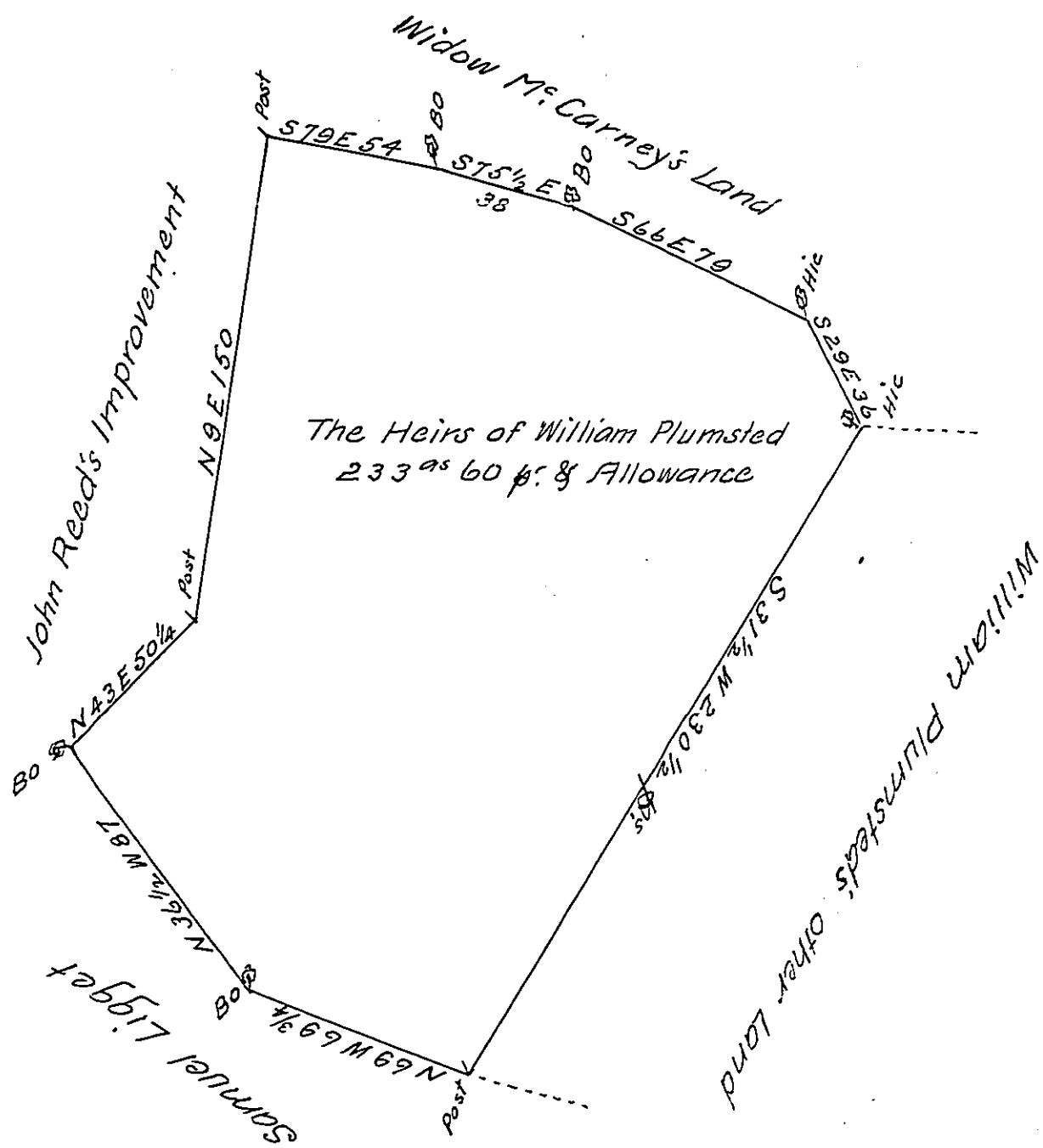


FORM NO. 1.



A Draught of a Tract of Land situate in Hamilton Township in the County of Cumberland Containing Two Hundred and thirty three Acres and sixty Perches and the usual Allowance of Six per Cent. for Roads &c. Survey'd for the Heirs of William Plumsted To John Luken Esq<sup>r</sup>. John Armstrong Surveyor General. D.S.

IN TESTIMONY that the above is a copy of the original remaining on file in the Department of Internal Affairs of Pennsylvania, made conformably to an Act of Assembly approved the 16th day of February 1833, I have hereunto set my hand and caused the Seal of said Department to be affixed at Harrisburg, this twelfth day of November 1907.

*Henry Houck*  
Secretary of Internal Affairs.